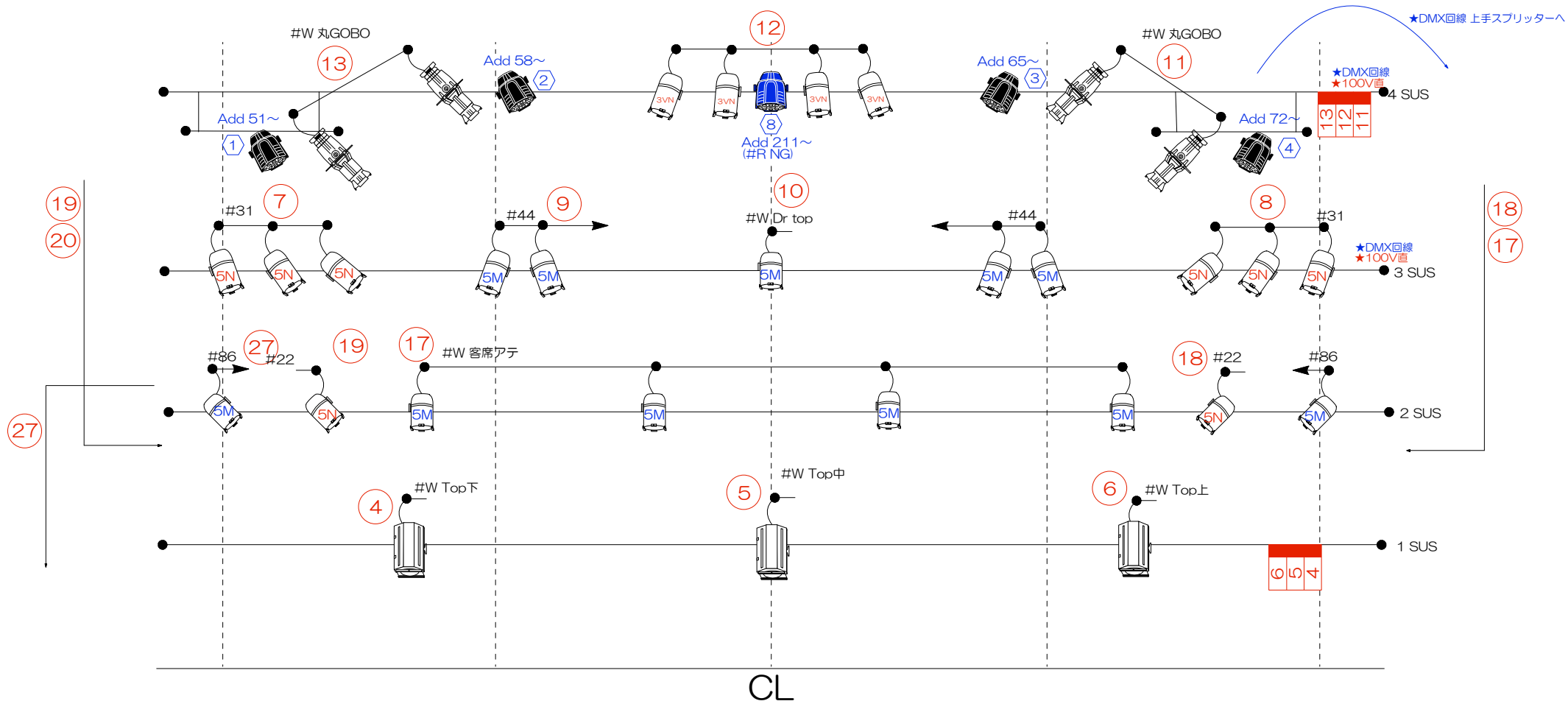


KYOTO FAN J LIGHT PLOT (SUS)



SUS all電動

SUS 予備回路 (20) (2Susの下手にT型1口)

KEYS



PAR 56 (M) 500w



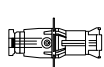
PAR 56 (VN) 300w



PAR 56 (N) 500w



C-8 1kw



SF 26 575w

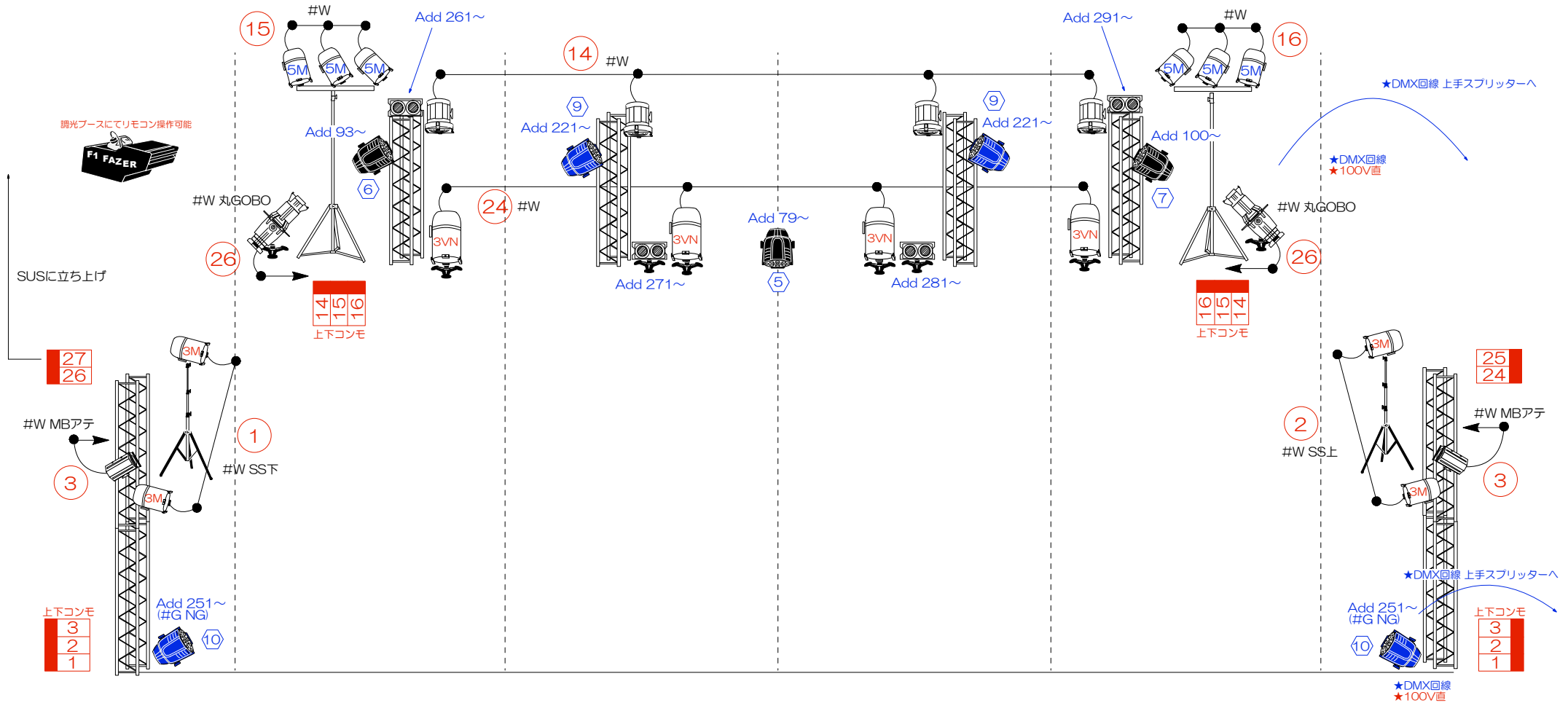


LED PAR Zoom
#R.G.B

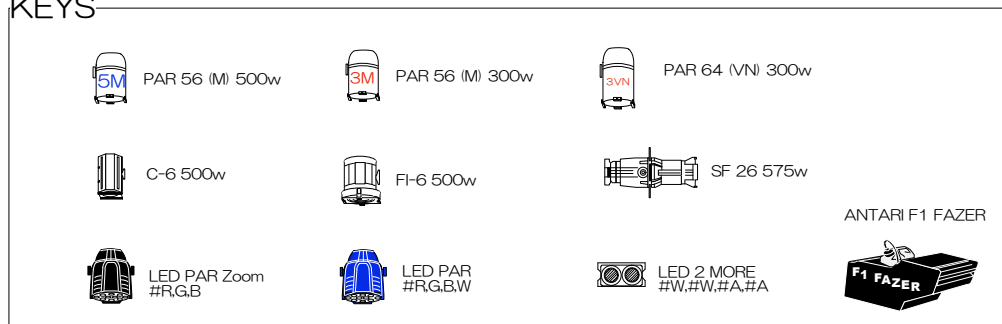


LED PAR
#R.G.B.W

KYOTO FAN J LIGHT PLOT (STAGE)

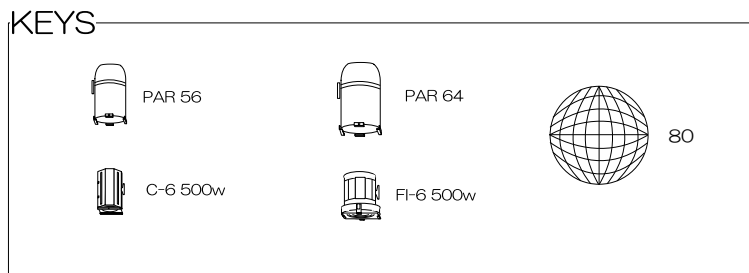
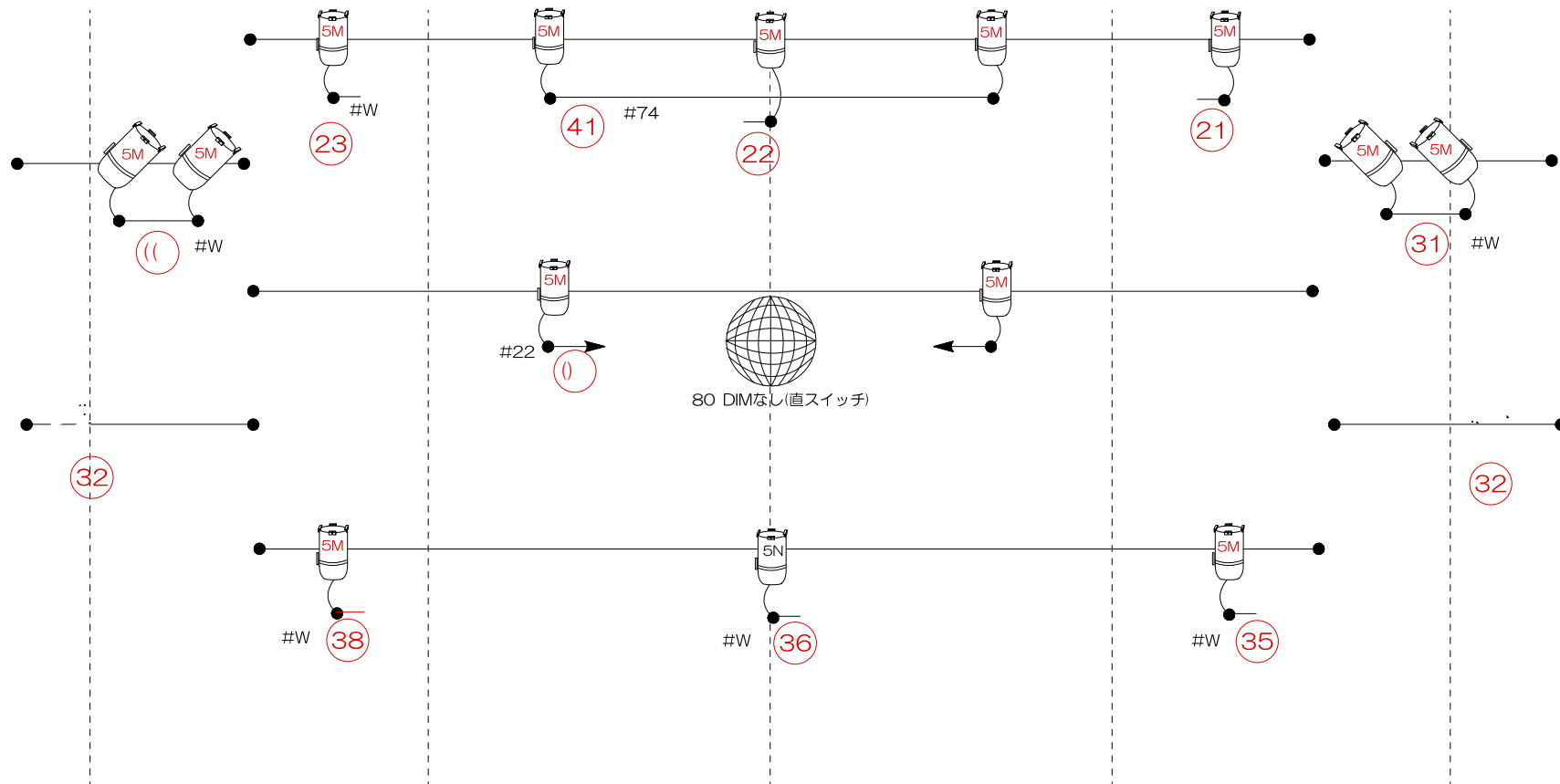


KEYS



ステージ予備回路 (25) (上手SSの足下にT型口)

KYOTO FAN J LIGHT PLOT (-front of house-)



17はall 昇降不可(天井直吊り)
色変え不可

客電(別卓制御)
39,40, ,42,43,44,45,46,47
中 KML × N 下 奥 前 中 中